

Saga Sports Commission



SAGA
SPORTS
commission

Contact:

SAGA Sports Commission
Saga Prefectural Government
Email : ssc@pref.saga.lg.jp

SAGA is..

one of the 47 prefectures in Japan.
well known for its great nature, food and culture.

Population . . . approx. 800,000

Area . . . approx. 2,400 km²

Time Zone . . . Tokyo : GMT +9:00

Annual average temperature(°C)/ 2020

	JAN	FEB	MAR	APR	MAY	JUN	JUL	AUG	SEP	OCT	NOV	DEC
SAGA	8.7	8.8	11.9	13.9	21.0	25.3	25.5	29.6	24.5	19.1	14.7	7.3
Nagoya	7.6	7.1	10.7	13.4	20.6	24.6	25.4	30.3	25.4	18.0	14.0	7.4
Tokyo	7.1	8.3	10.7	12.8	19.5	23.2	24.3	29.1	24.2	17.5	14.0	7.7

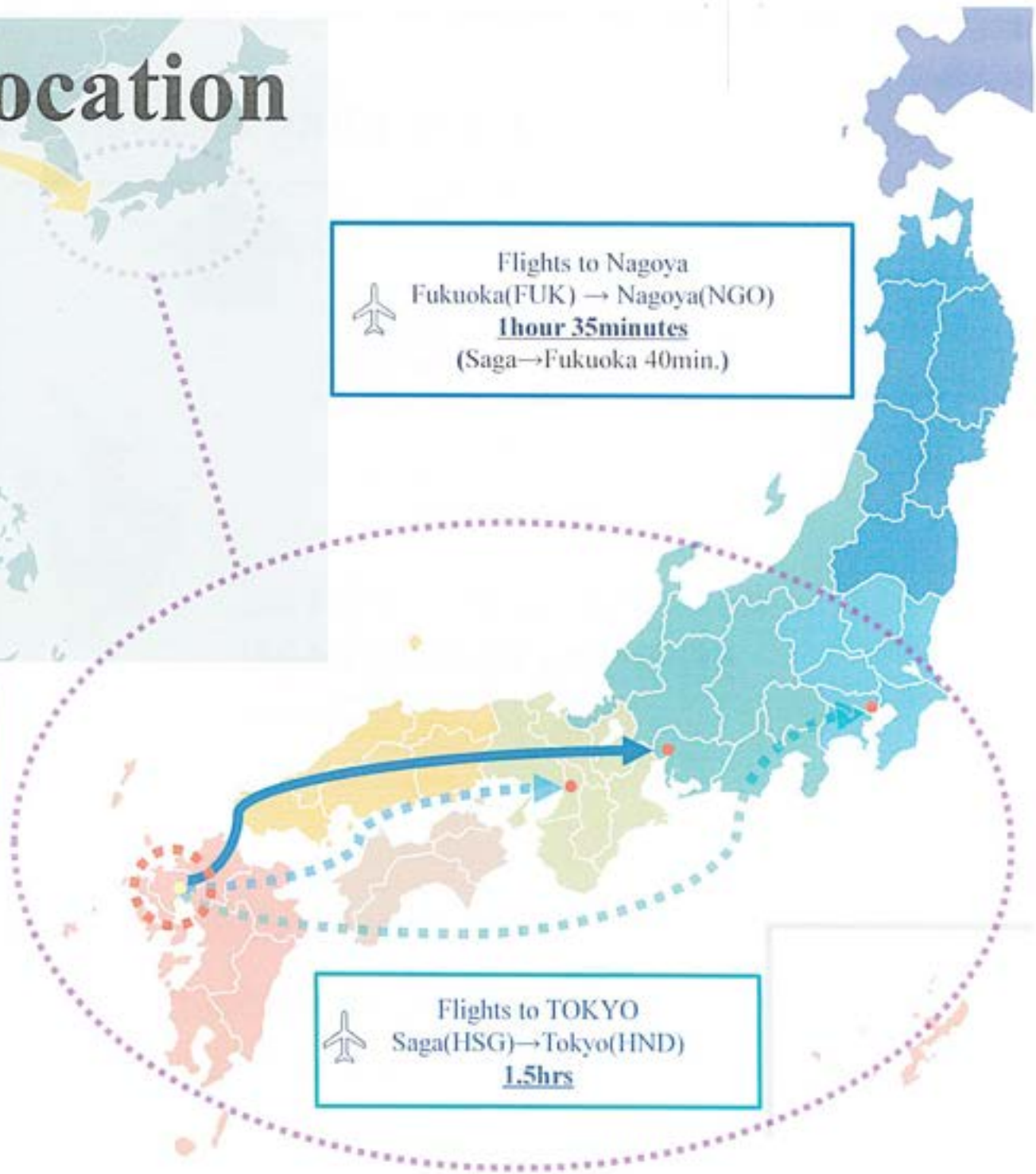


Geographic location



Flights to Nagoya
Fukuoka(FUK) → Nagoya(NGO)
1hour 35minutes
(Saga→Fukuoka 40min.)

Trains to Osaka (**3hrs+**)
Saga→Fukuoka(Hakata St.) 40min.
Hakata→Shin-Osaka 2hrs30min.



Flights to TOKYO
Saga(HSG)→Tokyo(HND)
1.5hrs

SAGA 2024

In **2024**, we host the National Sports Festival in SAGA.

Every year, one of the Japan's 47 prefectures has the honor of hosting the festival, resembling a domestic equivalent to the Olympic games. Approximately 700,000 people are involved each year.



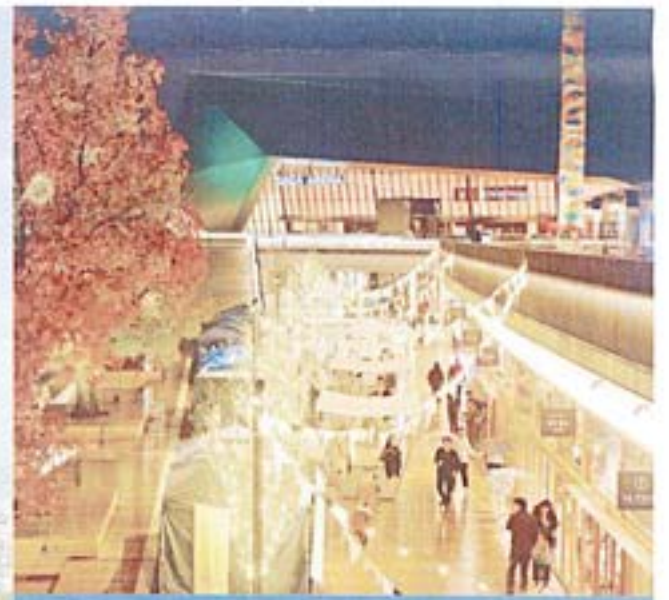
**Welcome to the
new Sports Festival.**
The power of sports for everyone.

The National Sports Festival
Saturday, October 5th, 2024 ~
Tuesday, October 15th, 2024

National Sports Festival for People with a Disability
Saturday, October 26th, 2024 ~
Monday, October 28th, 2024



**Most of the sports facilities in Saga are rebuilt, renewed
for the festival.**



SAGA SUNRISE PARK

Saga Sports Commission

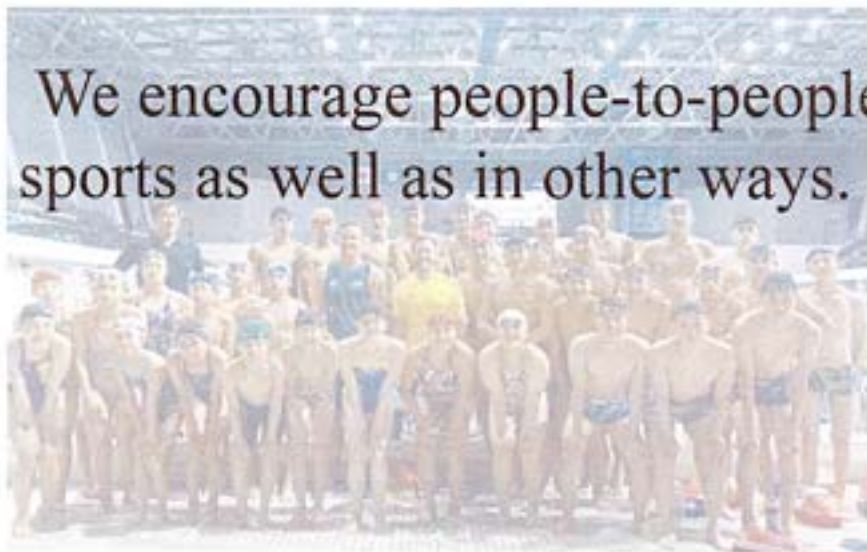
About us

Organization within the Saga prefectural government established in 2013.

Goal

We aim to vitalize the local community and to foster talent of local athletes through attracting sports events, competitions, and staging camps.

We encourage people-to-people exchange in ways related to sports as well as in other ways.



Training Camps in SAGA

Staging camps held in SAGA

Serbia

3x3
Basketball
(2021)

Netherland

Karate
(2019)

New Zealand

Athletics
(2015)
(2017)
(2021)
Para Athletics
(2021)

Netherland

Baseball
(2014)
(2016)
Karate
(2017)
(2018)

Finland

Judo
(2019)
National Team
(2021)

Germany

Baseball
(2019)

Australia

Lacrosse
(2017)

Handball
(2019)

Swimming
(2023)

Romania

Handball
(2019)



How we support teams

from SAGA to the TOP



Saga Sports Commission

- Accommodation

We will assist from rooming plans to menu plans to meet each athlete's special order.



- Venues for offsite activities.

Find places for cultural activities and team ceremonies, or dinner offsite.



1

Booking and negotiation with third parties.

- Training facilities



2

Provide Transportation for the whole team

- Airport↔Hotel

Buses to pick up the team at the SAGA airport on arrival.

- Hotel ↔ Training facilities

Shuttle buses to and from the training sites run every day.

Also, we offer cars and bikes for you to move around freely in Saga.



3

Fully support from every aspect

- Sauna, Onsen bathing after training.
- Ice bath, massage beds, water jugs etc.
- Media session arrangement.
- Opportunities to interact with local athletes.



Access

Compact and convenient town

★ Fuji Rhododendron Lake Water Stadium

★ Hotel Ryu Tou En

15minutes

10minutes

Nagasaki Expressway

Saga Yamato IC

SAGA SUNRISE PARK

Saga St.

10minutes

15minutes

Kase River

Forest Park

10minutes

Hotel New Otani

Prefectural gov. office



九州佐賀国際空港
KYUSHU-SAGA International AIRPORT

